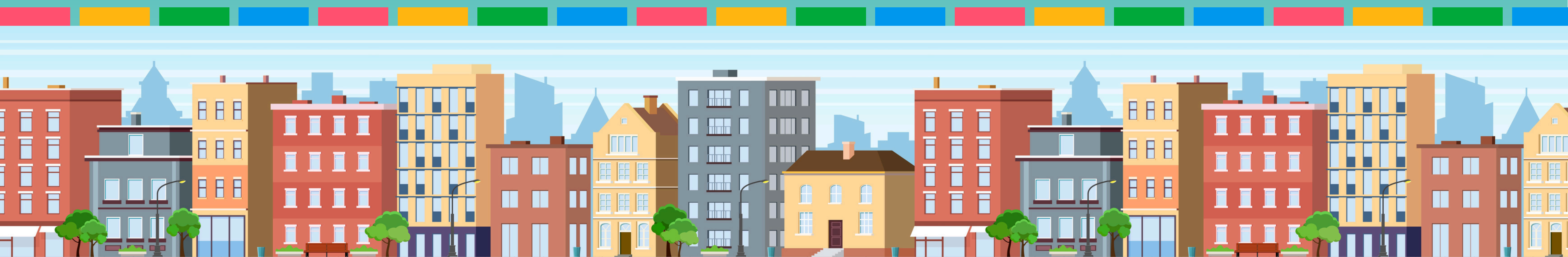


# APPLYING TO UNIVERSITY HALLS

Application Guide 2026/27



This document is a guide to help you through the process of applying for accommodation at the University of Southampton. Before you start, please make sure you have:

- A working email address
- Your 8-digit student ID number, which should be included on your communications from the University. If you don't have this, you can contact [your faculty of study](#) or the Student Hub on [studenthub@soton.ac.uk](mailto:studenthub@soton.ac.uk) or +44(0)2380599599.
- An idea of what type of accommodation you would like to apply for.

You can now register on the website and submit an application, using the following steps:

### Registering and Logging In

Go to the [accommodation portal](#) and click "Register" in the top right-hand corner. You will then be prompted to enter the following details:

**Student ID:** This is the 8-digit number, which should be included on your communications from the University. If you don't have this, you can contact [your faculty of study](#) or the Student Hub on [studenthub@soton.ac.uk](mailto:studenthub@soton.ac.uk) or +44(0)2380599599.

**First name and surname/family name:** Please ensure that these details match those on your university offer to study letter. If there are any discrepancies, you will not be able to register.

**Date of Birth:** Entered in DD/MM/YYYY format.

You will need to type your email address and password twice. Your password must contain a minimum of six letters and one number.



New students that apply before the **1st July 2026** are covered by the [accommodation guarantee](#)

**Student ID: \***

**First Name: \***

**Surname/  
Family Name: \***

**Date Of Birth: \***

**Email: \***

**Repeat Email: \***

**Password: \***

**Repeat Password: \***

Once you have completed these steps, a 6-digit validation code will be sent to the email address you used to register. Access your email account to collect the code and use this to log in to the online portal. You will only need this code the first time you log on.

**PLEASE NOTE: The email containing the validation code can sometimes be filtered into the spam or junk folders of some email accounts. If you cannot find the email in your inbox, please check the spam/junk folders as well.**

After logging in, you will be taken to the home screen. From here, you can make a new application for accommodation, check the progress of any existing applications, and accept any offers made.

By selecting “Account” in the top right-hand corner, you can also keep your personal details up to date. This includes your email address which you use to log in. If at any point you wish to change your registered email address, you can do so from the “Maintain Account” tab on the drop-down menu.

## WELCOME TO THE UNIVERSITY OF SOUTHAMPTON ACCOMMODATION PORTAL

### Applying for University Accommodation

Use our accommodation portal to:

- Apply for university accommodation
- Review and accept your accommodation offer
- Complete your online induction
- Schedule your arrival date and time

### Applications for 2025/26

Availability in our Southampton halls is currently very limited, and we do not expect additional rooms to become available until later in the year. However, we still have good availability at [Erasmus Park](#) in Winchester for those interested in living there.

Applications for Southampton-based halls will be processed based on room availability at the time of submission.

If you're considering alternative options, we also provide information on [private rented accommodation](#). The [Southampton Accreditation Scheme for Student Housing \(SASSH\) website](#) features a directory of private halls accredited by the ANUK Code of Practice. Additionally, the [Students' Union \(SUSU\) Advice Centre](#) offers guidance on private rentals, as well as financial and academic support.

## Submitting an application

Before applying for accommodation, you should look at the different types of accommodation available and decide what you would like to apply for. There are several different room types situated across a range of halls sites, and when you apply you will be asked to choose between three and five preferences.

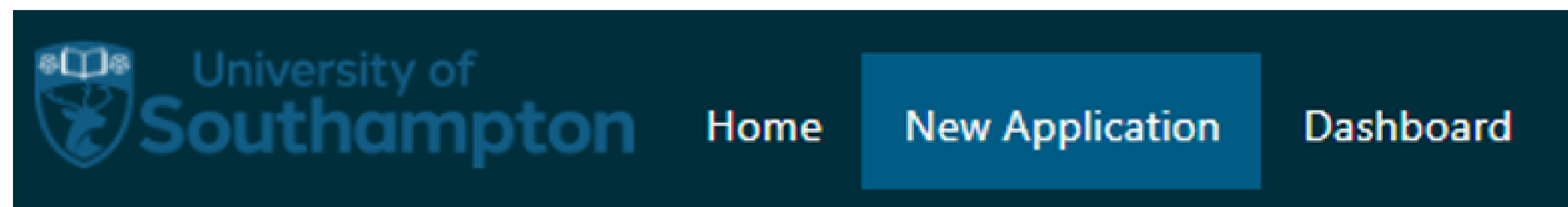
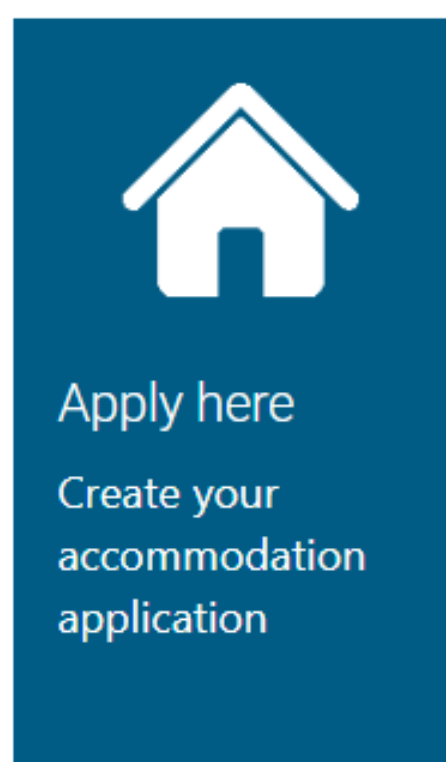
You can find out more about our halls on the [accommodation website](#).

### Different types of rooms include:

- **Part-catered/ self-catered:** Whether you would like to have some meals provided or cook for yourself. A catering package is also available. More information on the catering package can be found [here](#).
- **Room type:** These range from standard shared bathroom room or en-suite rooms to self-contained.
- **License duration:** Whether you require a short, standard or long contract.
- **Halls complex:** Which of our halls sites you would like to apply for.

When your application is considered, every effort is made to allocate you according to your preferences. The allocations are dependent on room availability, so we cannot guarantee that you will receive your top preferences - this is why we will ask for up to five choices.

You can submit a new application by selecting the “Apply here” button on the home page, or “New application” in the top right-hand corner.



You will need to select a few options which will determine what type of application you are making:

**Session:** This is the academic year that you are applying for, for example 2026-27.

**Course Type:** This determines what type of course you are studying, for example undergraduate or postgraduate.

**Pathway:** This is when you select what type of application applies to you. **Please note that some room types might be specific to a given pathway, so choose a pathway that is most appropriate to you.**

- ★ If you are registered with Student Disability and Inclusion, please select this option in this section. If you believe you may require support from this service, you should apply through this pathway.
- ★ If you select the LGBTQ+ pathway, please note that there will be nothing on your application which indicates that you have selected this option.



Select the option that applies to you

Four blue rounded rectangular buttons are arranged in a row, with a fifth button centered below them.

- New Undergraduate**  
I am a new undergraduate studying at the university of Southampton
- Disability and Inclusion**  
I am a new undergraduate who requires specific adjustments to my place of living or accommodation for a disability or long-term health condition
- Study abroad & exchange**  
I am a new Study abroad & exchange or Visiting student who requires part year accommodation
- New LGBTQ+**  
I am a LGBTQ+ new student who wants to live with other LGBTQ+ new students
- New Couples**  
I am a new undergraduate student looking to share a room with a partner

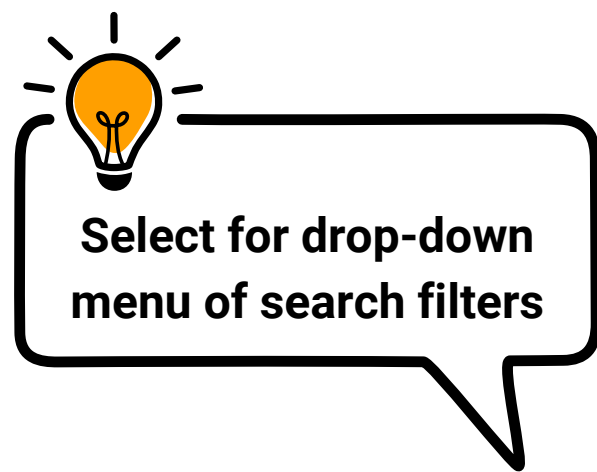


Select the option that applies to you

Three blue rounded rectangular buttons are arranged in a row.

- New Postgraduate**  
I am a new postgraduate studying at the university of Southampton
- Disability and Inclusion**  
I am a new postgraduate who requires specific adjustments to my place of living or accommodation for a disability or long-term health condition
- New Couples**  
I am a new postgraduate student looking to share a room with a partner

The system will then show you the accommodation available based on the information provided. This will include available contract lengths as well as different room types and prices, divided by halls site. You can filter the results by contract length, room type, catering and pricing using the menu on the left of the screen.



Licence type:

- 2627 38 Week Standard
- 2627 41 Week (Friday Start)
- 2627 41 Week (Thursday start)
- 2627 41 Week Standard

Room Type:


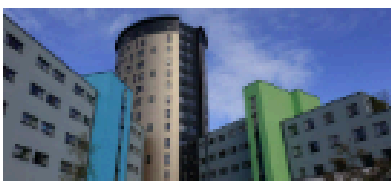
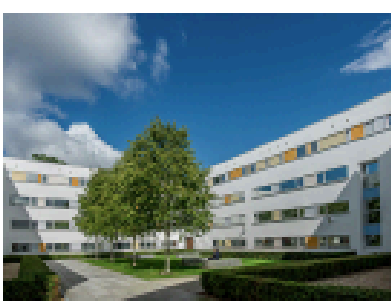
Catering option:

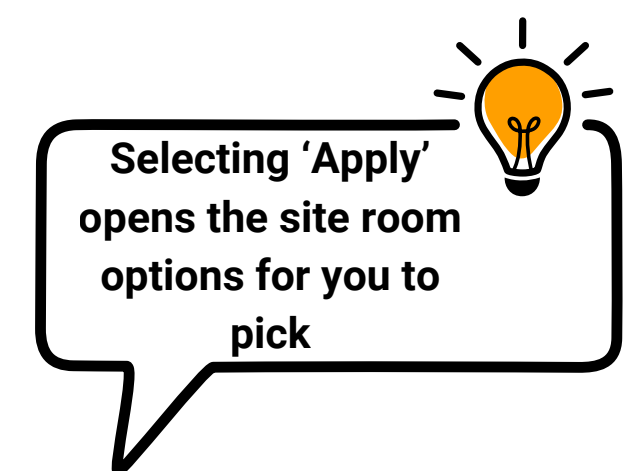
Price per week:

£0 - £282

## Search

Please note that Southampton and Winchester are different cities. We would encourage you to check where your course is based to ensure you select the most appropriate accommodation options.

Archers Road (Southampton) Student living in a residential area close to Southampton city centre.			
	2627 41 Week Standard	Standard en-suite	<input type="button" value="Apply"/>
	Catered Package (TermTimeOnly)		
City Gateway (Southampton) A modern hall of residence with convenient transport links within Southampton and beyond.			
	2627 41 Week (Friday Start)	Standard en-suite Quiet standard en-suite	<input type="button" value="Apply"/>
	Catered Package (TermTimeOnly)		
Glen Eyre (Southampton) A large student community with lots of green space, in the north of Southampton.			
	2627 38 Week Standard 2627 41 Week (Thursday start)	Standard en-suite Enhanced en-suite Enhanced Plus shared bathroom Alcohol free and quiet standard en-suite Enhanced shared bathroom Quiet standard en-suite Quiet standard shared bathroom Standard shared bathroom Quiet enhanced plus en-suite Enhanced plus en-suite Show flat enhanced shared bathroom Show flat enhanced plus shared bathroom Show flat standard en-suite Show flat enhanced plus en-suite Basic shared bathroom Show flat enhanced en-suite	<input type="button" value="Apply"/>



Select your choices on at a time. By clicking on the halls site, you will be shown specific information regarding the rooms available and can apply for these by clicking the red “Apply” button to the right.

**PLEASE NOTE: The photographs provided on the website are samples only and rooms/fittings can vary in their appearance depending on the building and specific location.**

Room Type	Licence type	Start Date	End Date	Catering	Price	Total	
Enhanced plus en-suite	2627 41 Week (Thu) 2627 41 Week (Thursday start)	10/09/2026	24/06/2027	Self catered	£227.92 per week	£9,344.72	Apply
Standard en-suite	2627 38 Week Stan	12/09/2026	05/06/2027	Self catered	£204.54 per week	£7,772.52	Apply

Please note that the room images displayed above, on our website, and on our Halls Life pages are typical examples of each room type and your actual room may be different to the examples displayed. Our rooms vary in size and layout. Not all room types may be available within the same area or building. Some flats comprise of different room types.

Please be aware you may be allocated an adapted room if one is available. Rest assured, we prioritise students who require adaptations to ensure they are accommodated in the most suitable rooms. If you have any concerns, please check the accommodation portal for more information.

Room Type	Licence type	Start Date	End Date	Catering	Price	Total	
Enhanced plus en-suite	2627 41 Week (Thu)	10/09/2026	24/06/2027	Self catered Self catered Catered Package (TermTimeOnly)	£227.92 per week	£9,344.72	Apply
Standard en-suite	2627 38 Week Stan	12/09/2026	05/06/2027	Self catered	£204.54 per week	£7,772.52	Apply

Please note that the room images displayed above, on our website, and on our Halls Life pages are typical examples of each room type and your actual room may be different to the examples displayed. Our rooms vary in size and layout. Not all room types may be available within the same area or building. Some flats comprise of different room types.

Please be aware you may be allocated an adapted room if one is available. Rest assured, we prioritise students who require adaptations to ensure they are accommodated in the most suitable rooms. If you have any concerns, please check the accommodation portal for more information.

### These samples are from the accommodation option: Mayflower

★ You can also choose your preferred licence type (contract length) for certain room options at halls sites using the drop-down menu. Some room types at certain halls sites are applicable for more than one licence type, so please choose the license type that best suits the duration of your studies.

★ Self-catered and the Catered Package (Term Time only) or Catered Package (AllYear), are applicable options at specific halls sites that can also be selected in this section of your application using the drop-down menu. The Catered Package scheme offers a daily allowance across University catering outlets which can be spent in any Campus Kitchen outlet during term-time for 41 week contracts, and all year for 51 week contracts. Further information on the Catering Package can be found [here](#).

★ Part-catered accommodation is only available at [Highfield Hall](#). With 2 meals a day, except weekends where brunch is served, and a variety of food options available for all dietaries, you can also take meals on campus if preferred.

After you have selected your first option, you will be taken to a summary screen and prompted to “Please add Another” or “Add Another”.

Remember that you should choose a minimum of five preferences with a maximum of up to seven preferences.

Once you have finished, your summary screen will look something like this:

Halls site	Contract length	Start date	End date	Catering	Price	Order	Delete
Highfield Hall (Southampton)	2627 41 Week Standard	12/09/2026	26/06/2027	Part catered	£241.71 Per week for Standard shared bathroom Catered	Move down	Delete
Archers Road (Southampton)	2627 41 Week Standard	12/09/2026	26/06/2027	Self catered	£180.53 Per week for Standard en-suite	Move up Move down	Delete
Mayflower (Southampton)	2627 41 Week (Thursday start)	10/09/2026	01/07/2027	Self catered	£204.54 Per week for Standard en-suite	Move up Move down	Delete
Wessex Lane (Southampton)	2627 41 Week (Friday Start)	11/09/2026	25/06/2027	Self catered	£194.67 Per week for Standard en-suite	Move up Move down	Delete
City Gateway (Southampton)	2627 41 Week (Friday Start)	11/09/2026	02/07/2027	Self catered	£194.67 Per week for Standard en-suite	Move up	Delete
<a href="#">Please add Another</a>							
<div style="display: flex; justify-content: space-between; width: 100%;"> <span>Add Another</span> <span>Next</span> </div>							

★ You can use the summary screen to move your preferences up and down or delete any options you want to remove from your application.

**PLEASE NOTE: The preferences are listed from top to bottom with your first choice at the top.**

When you are satisfied with your preferences, select “Next”.

The following screen will ask you to state any additional preferences, including:

### **Mixed or Female only accommodation**

We offer mixed-gender and female-only accommodation options. **Please note that while we previously accepted requests for male-only accommodation, demand was limited, and we were unable to allocate full flats.**

As a result, we are now only able to offer female-only or mixed-gender accommodation. If you require single-gender accommodation, this will take priority over other preferences such as room type.

### **Notes**

Please use this space to let us know of anything we need to be aware of when considering your application including but not limited to disability and inclusion, financial situation or if you require a longer bed due to height.

If you have indicated that you have a disability or health condition, please provide further information in this box, even if you have mentioned it in your UCAS form or have already told the university. We will liaise directly with the Disability and Inclusion Team, regarding room allocations.

## Further Details

**SINGLE GENDER ACCOMMODATION**

Please let us know if you would prefer single gender accommodation. Please note that we are only able to offer female only accommodation, not male only accommodation.  
If you request single gender accommodation we will prioritise this above your other preferences.

**Gender:**

- Prefer Mixed Gender
- Require Female Only

**NOTES**

Please add any further notes you want to include on your application in the box below. We will do our best to use the information that you provide when allocating accommodation, however we can not guarantee to meet your requests.

If you have any disabilities or medical issues that we may need to take into consideration when allocating you a room, you must include relevant information here. This includes temporary conditions that might affect you while living in our accommodation, such as occasional wheelchair use, fainting spells or seizures. Please provide as much information as possible to help us understand what you need. We may contact you for more information on what you have disclosed to us.

If necessary we will liaise with the [Student Disability and Inclusion Team](#) to make the most suitable allocation for you, which will require us to share the information in your accommodation application.

★ **Please use the Notes space to let us know of anything we need to be aware of when considering your application**

Once you have completed all the fields on this section, click “Next” to go to the Preview.

On this page you will be able to review your application and read the Terms & Conditions before pressing submit.

**Please note that the group reference is not applicable to new undergraduate students.**

## Application Details

This is your accommodation application.

**Application refere...** 174000  
**Session** 2026-2027  
**Application Date** 14/04/2026  
**State** Complete but not Submitted  
**Group Reference**  
**Gender Preference** Prefer Mixed Gender

### Preferences

[Edit Preferences](#)

These are your preferences.

Priority	Halls site	Room Type	Contract length	Catering	Start date	End date	Price	Total
1	Highfield Hall (Southampton)	Standard shared bathroom Catered	2627 41 Week Standard	Part catered	12/09/2026	26/06/2027	£241.71 Per week	£9,910.11
2	Archers Road (Southampton)	Standard en-suite	2627 41 Week Standard	Self catered	12/09/2026	26/06/2027	£180.53 Per week	£7,401.73
3	Mayflower (Southampton)	Standard en-suite	2627 41 Week (Thursday start)	Self catered	10/09/2026	01/07/2027	£204.54 Per week	£8,590.68
4	Wessex Lane (Southampton)	Standard en-suite	2627 41 Week (Friday Start)	Self catered	11/09/2026	25/06/2027	£194.67 Per week	£7,981.47
5	City Gateway (Southampton)	Standard en-suite	2627 41 Week (Friday Start)	Self catered	11/09/2026	02/07/2027	£194.67 Per week	£8,176.14

### Notes

[Edit](#)

### TERMS AND CONDITIONS

Find below a link to the terms and conditions for this application.

<https://www.southampton.ac.uk/uni-life/accommodation/terms-conditions.page>

Delete

Back

Submit

## How to add a group reference name:

Returning students that have applied through the Returners pathway and Postgraduates can apply with other students in a group.

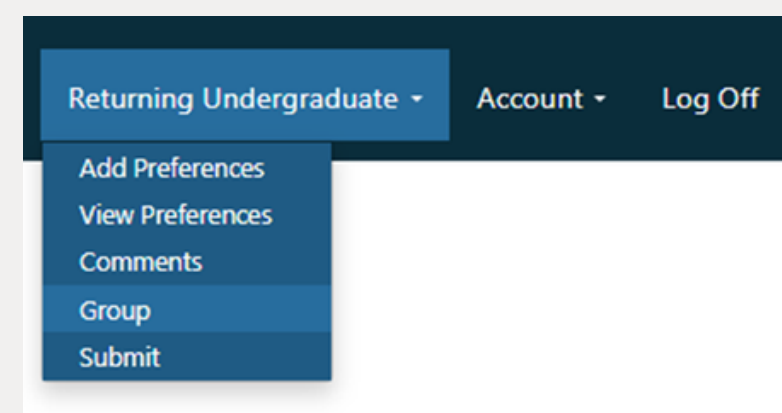
Within your application and before you submit, you can add a "Group reference" by selecting the drop-down option in the top right corner of the application screen on your selected pathway, and select 'Group'.

You will be taken to a new page where you can choose to 'Generate New Group' or 'Join' a group. Please note that you can create your own group name in 'Join' by typing your custom group name into the box, then clicking the join button.

Please follow the on screen guidance on applying the group reference. If you join an existing group you will see the names of the members that have applied using that group reference already.

The Group reference must be the same and added for all members of your group. Please input your group reference into the application notes section as well, so that there is no confusion with other groups.

We must receive an application from everyone in the group individually and we encourage you to submit the same site/room type/catering/contract preferences to ensure you are allocated together in the same flat.



### Group Application

- Generate New Group  
 Join

You are currently not a member of a group.

As either a postgraduate, returning undergraduate or a pre-sessional student, you have the option to apply as a group so that you can share a flat with friends.

The first person to apply should choose a group name and type it in the box below. The rest of the group can then apply, quoting the group name in the same box. To be placed with your group, please ensure that you have applied for the same hall site and room type as your friends. You must put your preferences in the same order.

Please note that if your group does not fill a flat, there will be other students placed with your group. We will try our best to accommodate your group request, though it is not guaranteed.

**Group Name**

### Group Application

- Generate New Group  
 Join

You are currently not a member of a group.

As either a postgraduate, returning undergraduate or a pre-sessional student, you have the option to apply as a group so that you can share a flat with friends.

The first person to apply should choose a group name and type it in the box below. The rest of the group can then apply, quoting the group name in the same box. To be placed with your group, please ensure that you have applied for the same hall site and room type as your friends. You must put your preferences in the same order.

Please note that if your group does not fill a flat, there will be other students placed with your group. We will try our best to accommodate your group request, though it is not guaranteed.

**Group Name**

### Group Application

- Generate New Group  
 Join

You are currently a member of a group with the details below.

**Group Name** **GRP-XXX**

The other members of your group are:

- **Group Member Name**

### Application Details

This is your accommodation application.

<b>Application refere...</b>	173992
<b>Session</b>	2026-2027
<b>Application Date</b>	27/02/2026
<b>State</b>	Complete but not Submitted
<b>Group Reference</b>	<b>GRP-XXXXX</b>
<b>Gender Preference</b>	Prefer Mixed Gender

Lastly, you will be asked to tick the box below to confirm you are happy with your application and that you have read the terms and conditions of applying for a place in halls.

## Submit Application

Please take the time to do a final review of your application and ensure that all of your preferences meet your requirements, are within your budget, and that you have included any details in your application notes that we need to be aware of - including if you have any disability and inclusion requirements.

**You cannot change your application form once you have submitted it.**

By ticking this box I confirm I have read, understood and accept the [terms and conditions](#) of applying for halls, which also explain how we use your personal data, full details of which may be found in our [privacy notice](#).

I confirm I have read and understood the terms and conditions of applying for a place in halls.

No	Yes
----	-----

You have now submitted your application!

You can review your application at any time using the “dashboard” link in the top right-hand corner of your home page. You can delete your application and submit a new one with your new choices until your application deadline so don't panic if you decide that you would like to make some changes. If you need to make a change to you application and are unable to, please contact the accommodation team directly using the details below.

**Remember - the university will endeavour to allocate according to your preferences wherever possible, but this is subject to room availability at the time of allocation.**

If you have a question not answered here, please contact the student hub directly via:

Telephone: +44(0)2380 595959

Email: [accommodation@soton.ac.uk](mailto:accommodation@soton.ac.uk)

In person: Student Hub, Building 37, Highfield campus.